



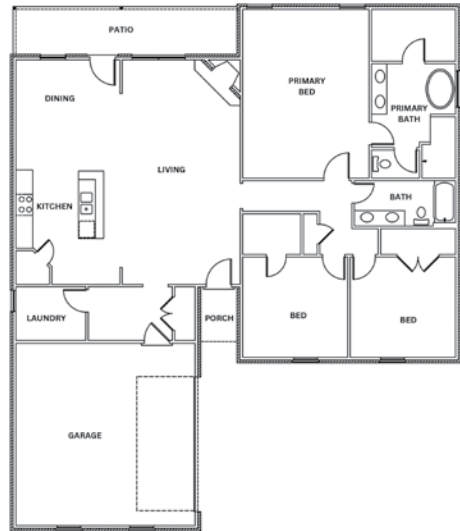
ABOUT THE HOME

- All 10-foot ceilings with 8-foot doors.
- Brick fireplace.
- Free standing bathtub.
- Stainless steel appliances.
- Energy-efficient compact design.
- Open floor plan.
- Large covered back porch.
- Large primary suite.
- Tankless gas water heater.
- Built with compassion.

SUPPORTED BY

Acme Brick Company
 All-Service Window & Door Co.
 CenterPoint Energy
 Cook's Lighting & Flooring
 Custom Woodworks
 Johnny Moughon Construction
 JOTS Rentals

Longview Glass Company
 Lowe's Home Improvement
 Martin Marietta
 McCoy's Building Supply
 Overhead Door Company
 Quality Granite & Marble Countertops
 StrucSure Home Warranty



BED	BATH	GARAGE	LIVING SQ. FT.	SCHOOLS
3	2	2	2,036	Hallsville ISD

MEET THE BUILDER



JENNRAND DIVERSIFIED
Randy Randolph



P: 903.557.1070
 jennrand@outlook.com
 www.jennrand.com

DIRECTIONS



From East Loop 281 and US-80/East Marshall Avenue: Head east on US-80 for 6 miles. Turn right onto South Cypress Street then turn left onto Bois D'Arc Street and continue for 0.3 miles. Turn right onto Labrador Lane, drive 0.2 miles and turn left onto Pintail Lane. The house will be on the left.

TEALWOOD • 117 PINTAIL LANE, HALLSVILLE, TX